

BETHEL LUTHERAN CHURCH

A congregation of the Evangelical Lutheran Church in America
79 Brooklyn Street PO Box 606 Portville, NY 14770
(716)-933-6699

e-mail: bethelportville@gmail.com

Websites: (congregation) www.bethelportvillenyny.org; (synod) www.upstatenysynod.org; (ELCA) www.elca.org

Worship Service – Sundays at 8:30am;

Sunday School, (*Oct. thru May*) at 9:30am, zoom class

Confirmation Class at 9:45am

God's work. Our hands.

***In case of a pastoral emergency, please contact the church at:
716-933-6699 or Pastor Derek Cheek at 716-307-7963.***

April 2021



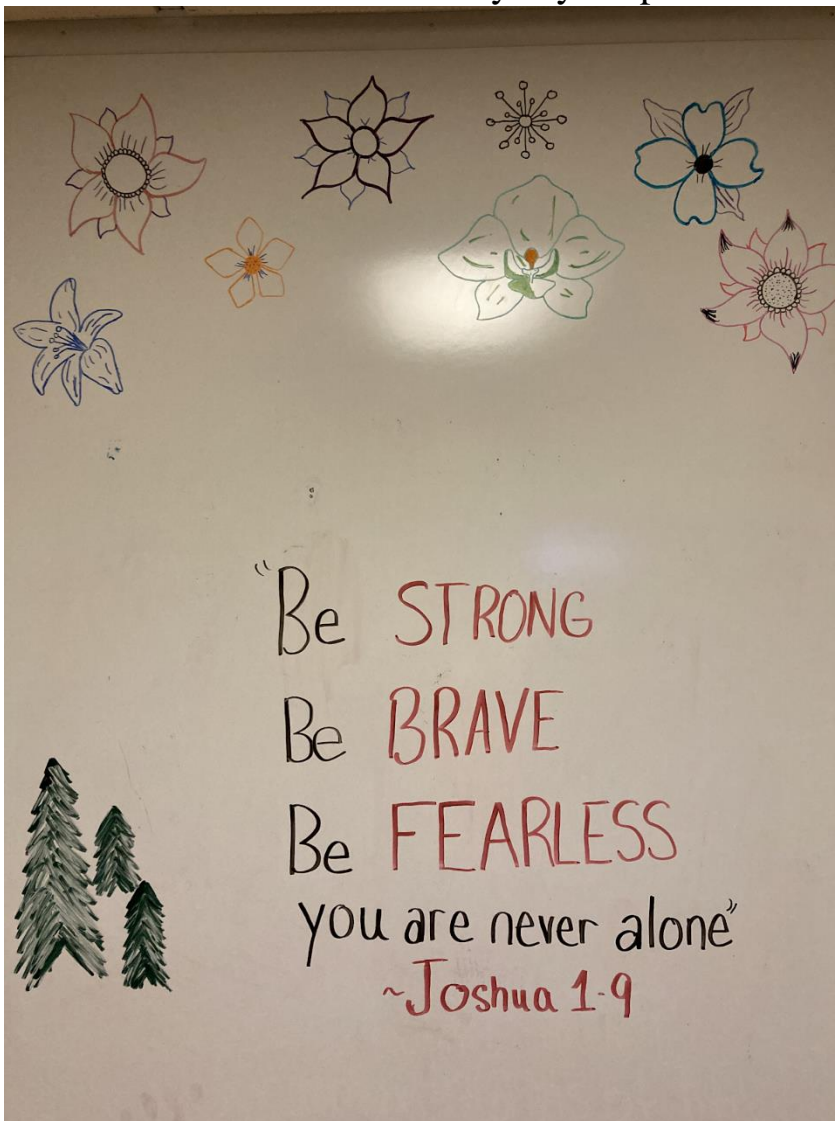
In a past issue of *Stewardship* there is a Scripture verse that woke me up. The verse is from the Old Testament and written by the prophet Haggai. Speaking on behalf of God, here is what God said to the Jews who were about to build a temple in which to worship: “The silver is mine, and the gold is mine, says the Lord.” The writer of the 24th psalm made the same point when he wrote: “The earth is the Lord’s and all that is in it.” So that compels us to ask, if ultimately God owns everything, where does that leave us?

The answer Scripture gives us is very clear. We are care takers of God’s earth and all that is in it. We are stewards, or managers, who have the responsibility of caring for the earth and for whatever God blesses us with. Not only responsible for this earth, but our bodies, minds, and the resources that come our way. Because ultimately what we say is ours is not ours at all.

There is an old joke about two men standing on a street corner when a funeral procession came into view. They were respectfully silent until they noticed that somehow a Brinks truck had gotten right behind the hearse. That was when one fellow said to the other, “Who says you can’t take it with you?” Well, the sober truth is we really can’t take it with us. Yet there is a lot we can do with what God allows us to manage right now. We are the servants of the Lord. So let’s be the best caretakers of whatever the Lord has placed before us.

Prayer: Dear Lord, you have given us such great responsibilities. Please give us the guidance and strength to do what we can do for your Kingdom! **Amen**

Bible verse written at Bethel by Myra Sprout



Pray First!

• For all service men and women, and their families, especially *Gavyn Neudeck, Hillary Peterson, Casey McCarthy, Tyler McCarthy, Kendra Linn, Travis Dorvit, Kurt Michael Miller and Kyle Lust*. For Christ to be made known in our companion synods – *Zimbabwe* and *Zambia*, and our partner synod – *Central/Southern Illinois Synod*. For the Franciscan community at *Mt. Irenaeus* and the *Burkhart Retreat Center for Life* – retreats in our local area. For our Bishops, Bishop Elizabeth Eaton (ELCA) and John Macholz (Upstate New York Synod), Assistants to the Bishop Dave Preisinger, Mary Johnson, and Dean Derek Cheek. For the mission congregations in our synod—*Organic Faith* in Amherst and *Todos los Hijos de Dios* in Amsterdam. For the pastors and congregations in our Southwestern Conference and for our congregation council leaders – President *Ruth Brewer*, Secretary *Trinette Brewer*, Treasurer *Doug Ploetz*, Vice President *JoAnn Kile*, and members *Skip Giberson, Rick Giberson and Ron Kile*. For our sister congregation, *Peace Lutheran* and their ministry in Slidell, LA for the ministry of *ELCMA* – Evangelical Lutheran Coalition for Mission in Appalachia. For area ministries: *Genesis House, Portville Community Food Pantry*, and *Interfaith Caregivers, Accounting Beyond Borders*.

PLEASE SEE BULLETIN BOARD outside the sanctuary for a COMPLETE SECRETARY'S REPORT.

<u>Council Member</u>	<u>Committee Assignment</u>
Ruth Brewer	Council President
JoAnn Kile	Vice President, Worship & Music, Christian Education
Trinette Brewer	Secretary
Doug Ploetz	Treasurer
Skip Giberson	Fellowship, Stewardship
Ron Kile	Bldg./Property
Rick Giberson	

In case of a pastoral emergency, please contact the church at: 716-933-6699 or Pastor Derek Cheek at 716-307-7963 cell phone or at Immanuel 716-372-0650. When you call the church phone number it will be automatically forwarded to Nannette Giberson's cell phone. You will be able to talk directly to her or leave her a message and she will return your call. Thank you.

Prayer Chain:

If you have need of prayer, we have an email prayer chain. Just call Nannette at 716-933-8855 or e-mail rangiberson@gmail.com.

This is temporary while Bev's computer is down.

Bev Robinson – phone number 814-225-3341 or e-mail at grandmagee756@gmail.com

Please keep these members in your prayers and send them a card if you are able:



Hilda Prosser
% Cuba Memorial Hospital
Nursing Home – Room 238W
140 West Main Street
Cuba, NY 14727
(585) 968-2000 Ext. 712

Have you checked out Bethel's Facebook Group?

The url

is: <https://www.facebook.com/groups/127210584114232/>.

Deadline for the April newsletter is April 18th.



The Portville Food Pantry collects these items on an on-going basis: spaghetti, spaghetti sauce, pasta, mac and cheese, pork and beans, canned vegetables and fruit, tuna, soup, rice, egg noodles, cereals and canned tomatoes.

Fundraiser Funds are divided as follows:

- 10% Charity of our choice**
- 10% Benevolence**
- Rest in general fund**



We NEED people to sign up as worship servants.
We are in need of Lectors, Prayer Leaders, Ushers, Communion assistants and Altar Guild. There are sign-up sheets on the table in Fellowship Hall. Please sign up for one or more of these positions as you feel led. Thank you.

April 2021 Worship Assistants, Birthdays, and Anniversaries

Worship Assistants

No acolyte this month

Communion Assistant:

Linda Scott

Lectors:

April 4th*Jo Kile*

April 11th*Caroline Miller*

April 18th.....*Don Linn*

April 25th*Connie Matteson*

Prayer Leader:

April 4th*Ruth Brewer*

April 11th*Myra Sprout*

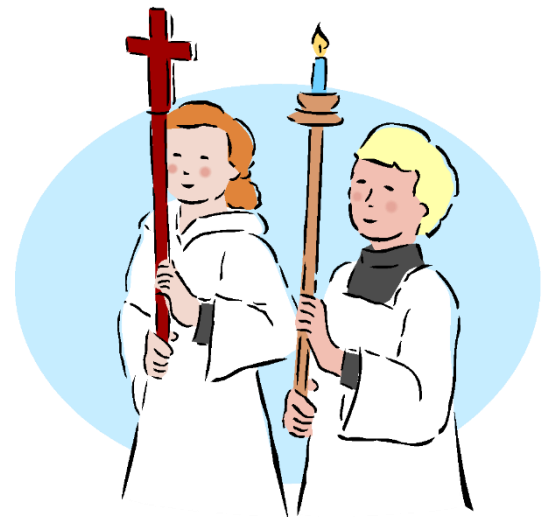
April 18th*Linda Scott*

April 25th*Linda Scott*

Usher:*Rick Giberson*

Mail Greeter:*Nannette Giberson*

Bread Baker:.....*Ron Kile*



Altar Guild:.....*Ruth Brewer*



2---Shirley Levernier
2---Chloe Dunn
3---Pamela Deibler
7---Laurie Dunn
8---Jillian Miller
14---Allison Doty
16---Hudson Miller
20---Judy Graves
22---Jimmy Baughman
24---Connor Dunn
28---Dan Parr
29---Nannette Giberson



BETHEL LUTHERAN CHURCH CALENDAR – April 2021

Sunday, April 4

EASTER

8:30am – Worship

9:30am - 10:00am Sunday School Zoom Class

9:45am - 10:45am Confirmation Class

Sunday, April 11

SECOND SUNDAY OF EASTER

8:30am – Worship

9:30am - 10:00am Sunday School Zoom Class

9:45am - 10:45am Confirmation Class

Thursday, April 15

Council meeting at 7pm

Sunday, April 18

THIRD SUNDAY OF EASTER

8:30am – Worship

9:30am - 10:00am Sunday School Zoom Class

9:45am - 10:45am Confirmation Class

Sunday, April 25

FOURTH SUNDAY OF EASTER

8:30am – Worship

9:30am - 10:00am Sunday School Zoom Class

9:45am - 10:45am Confirmation Class

Vicar Gerry Zimmerman wants all to know that he can get communion to those of you that would like to have it, just let him or Nannette Giberson know.

WHAT'S HAPPENING!!!

Zoom **Sunday School** class will be held **Sunday mornings** from **9:30am – 10:00am**.

Confirmation class will be held **Sunday mornings** from **9:45am – 10:45am**, also on Zoom. **Jo Kile and Ruth Brewer** are the confirmation class teachers.

Bethel now has Zoom services! Nannette has set up Zoom meetings for Bethel's Sunday services. She is also sending out Zoom info for Shepherd of the Valley's service. Thank you Nannette!

<https://us02web.zoom.us/j/88305027386?pwd=L0pxbU9UK1xcmNEWdVPbXFiVjBVUT09>

Bethel Zoom Service: 8am Sundays. The **meeting ID: 883 0502 7386** and **passcode: H9i7j9** are the same each time.

Shepherd Zoom Service: 10:30am Sundays. Shepherd of the Valley's meeting ID and passcode change weekly.

The **Spring Conference Assembly, April 25th**, at **St Paul's in Ellicottville** which is going to be in person and zoomed. Our delegates are Terri Ploetz and Ruth Brewer.

Synod Assembly, June 3-5, held virtually. Our delegates are Terri Ploetz and Ruth Brewer.

The April, May, June edition of **Christ in Our Home** is now available at church

Maundy Thursday

at Shepherd - 6:30 pm (will be available on Zoom)

at Bethany - Bethany and St Stevens together - not sure of time (maybe 7 pm)

at St Johns - St Johns and Immanuel together - 7:00 pm

Good Friday

Shepherd - no service

All 4 churches together at Immanuel at 7:00 pm

Holy Saturday

St Stevens @ 7:30 pm outside with bonfire

Tentative dates and plans for activities at Bethel

May 23rd - Confirmation service

Yard sale after May 23rd - Jo Kile chairperson

August 3rd - Community Night Out

August 7th - drive thru chicken bbq with pie sale fundraiser, donate the money from the pie sale to the Portville Food Pantry.

October 2nd - monthly breakfast

October 14th - Pulled Pork Dinner for Mission trip - Ruth Brewer chairperson

October 16th - World Food Road Rally



Vicar Gerry installing new council members - Skip Giberson, Ruth Brewer, Rick Giberson and Ron Kile.



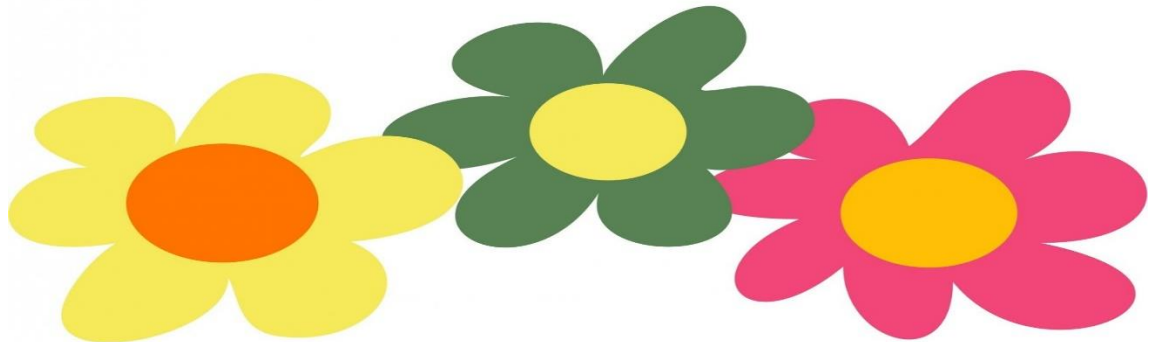
Trinette sent this link out to help us stay in **prayer during this pandemic.**

<https://www.elca.org/Faith/DailyBible>

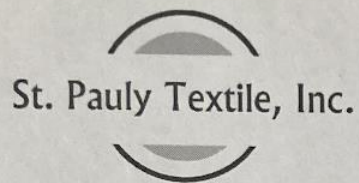
Trinette also sent this if you are interested in staying up with your **tithing - Online Giving for Bethel:** <https://bethelportvilleney.breezechms.com/give/online>

You can also **give through texting.** The number is 716-477-3131. The first time it takes you to the giving page and then after that you text "give \$50".

Thank You



for your Kindness



Bethel Lutheran Church

Dear Friends,

We hope this letter finds you well and warm. This past year was challenging in many regards for our company, as well as many of the organizations and people we partner with. On the bright side, however, it seems that lots of people who were stuck at home took the opportunity to clean out their closets! Here is the year-end information for your clothing shed:

- 31,179 pounds of clothing were donated to your shed in 2020.
- This was enough to clothe an estimated 2,486 people all over the world.
- Based on this volume of clothing, your organization received \$1,247.

Thank you so much for continuing to partner with us and for helping us get through this challenging year. We truly appreciate all the support you've given to this program and to our team!

Sincerely,
The Team at
St. Pauly Textile, Inc.



Interfaith Caregivers, Inc.
Neighbors Helping Neighbors

February 22nd, 2021

To Cattaraugus County Church Leaders,

Interfaith Caregivers in Olean continues to serve the residents of Cattaraugus County, to the extent possible, during the COVID-19 pandemic. Our volunteers are transporting the frail elderly and health impaired to medical/dental appointments and for necessary errands. We are also providing friendly phone call check-ins for some clients. Interfaith Caregivers receives no government funding.

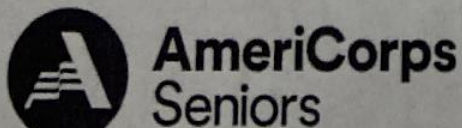
We are looking to expand our pool of volunteers as local need is great. If you or someone you know is interested in volunteering, please call our office at (716) 372-6283. The office is staffed Monday through Friday from 8:00 a.m. - 4:00 p.m.

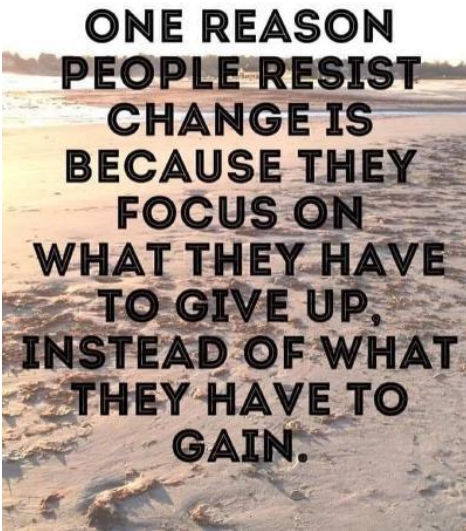
Donations are gratefully accepted at PO Box 319, Olean, New York 14760.

Sincerely,

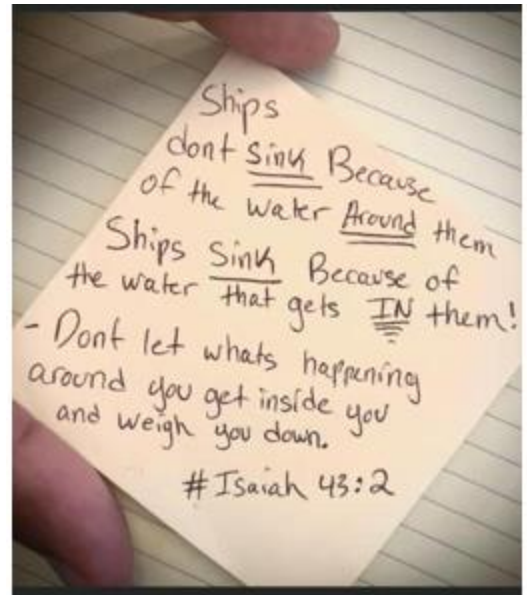
Mrs. Julie Hall
Interfaith Caregivers Director

212 Laurens St. P.O. Box 319 Olean NY, 14760
phone: (716) 372-6283 fax: (716) 372-6326
www.interfaithcaregiversinc.org





Submitted by Nannette Giberson



Confirmation Class News

Photos submitted by Jo Kile

An experiment from their confirmation workbook- It was a Mobius activity - they lit the paper and put it in the vase and placed the peeled egg on top to see if the egg would be sucked down into the vase. Success!



It worked!!!



Confirmation class getting the health care kits ready to donate to Genesis House.

Because Jesus was Human
and GOD, he was able to

heal	respond	teach
create	love	help
forgive	care	forgive <u>sins</u>
protect	respect	all seeing
		promise

Was Jesus of Nazareth really
God?

What could GOD
accomplish through
YOU?

Tell friends about what ^{God} has done
Praying to help you get through
tough times

Noticing his creations + help them
~~survive~~

Invite friends to church

Read the bible

Worship GOD

Welcome people into GOD's word

Gianna Nix, talented Granddaughter of Marge and Cliff Nix

Shorthanded B-R hangs on, beats C-S in playoff opener

BOLIVAR — The Bolivar-Richburg girls basketball team was already without a pair of starting guards.

Then, it lost star forward Aliyah Cole, who suffered a knee injury midway through the third quarter and never returned.

And still, even after surrendering a double-digit lead, it managed to hang on down the stretch and secure its biggest win of the season.

Jianna Nix filled much of that void, collecting 10 points and 15 rebounds while adding four steals and a pair of blocks, as the fourth-seeded Wolverines edged No. 5 Clyde-Savannah, 34-33, in a Section 5 Class C2 quarterfinal on Monday. Their reward? A date with No. 1 Pavilion (11-0) in Wednesday's semifinals.

Kelsey Pacer and Braelyn Bentley also came up big for B-R (8-2), with the former piling up 13 rebounds, five assists, two steals and three blocks and the latter pulling down 10 boards. Behind them, B-R held leads of 13-1 (after the first quarter) and 20-9 (at halftime) before fending off C-S, shorthanded,



Times Herald file photo
With three starters sidelined, Bolivar-Richburg junior Jianna Nix came up big on Monday night, collecting a double-double of 10 points and 15 rebounds to key the Wolverines to a playoff victory over Clyde-Savannah.

aging 15 points and finished with nine) hurt her knee part-way through the third, so obviously that was a big presence who was missing down the stretch.

"The girls we had in who finished it off gave every last bit that they had. I've never seen a bigger display of heart from a group of kids. I'm incredibly proud of them for digging in and giving it everything they had to keep our lead in the end."

He added, "It was amazing to watch."

Aslyn Rattray had 16 points for the Golden Eagles (6-5).

**CCAA EAST I
Falconer/Cassadaga Valley 57,
Salamanca 25**

over the final two quarters.

"Both teams were without key players," B-R coach Justin Thomas said. "Both

teams were facing a whole lot of adversity. Foul trouble led to their second-half surge and Aliyah (who'd been aver-

Girls hoops ... page B-2

Impacto

matthew 9:36

Impacto Ministries

TAKE A LOOK AT THIS! PRAISES & PRAYER REQUESTS

March 16, 2021 by Impacto

Can you believe it was 1 year ago we were asked to close all our ministries for 2 weeks? We figured 2 weeks and we'd be back in business! Boy, were we mistaken! Through this last rough year we hope Pastor Luis' words have rung in your ears, "joy is a choice; will you decide to be joyful or grumpy today?"

More importantly remember what God's Word says, "Rejoice in the Lord always, and again I say rejoice." Philippians 4:4

Below we would like to share with you some reasons we are rejoicing and praising God and some reasons we are rejoicing as we ask God in "prayer and supplication" (Phil. 4:6) to fulfill those needs.



-
- We have said this time and time again, we praise God for the Virtual Bible Seminary! We praise God for all of you who have faithfully donated towards this ministry. The feedback we have received has been delightful. So many leaders, laymen and laywomen, new pastors, old pastors, and some that want to simply learn more of the Word of God have joined us for weekly classes. Praise God!
-

- We praise God for this hard, crazy, outrageous year we have had. We have learned so much! We have been reminded to trust in God, we have been reminded of the awesome supporters He has given us, and we have been reminded that there are a million ways we can show the love of Christ.
- A ministry that has been a huge blessing over the last year has been Healing Hands. We have been able to assist many with medicine, lab work, ambulance (here you have to give the gas money needed to use an ambulance), chemotherapy, x-rays, and so much more!
- The construction at Xejuyu is something we are praising God for daily. As we see the vision taking shape, as we look at the many men working for a stable salary, as we imagine the future and know that God will use it for many to hear the Good News and come to know Him as their Lord and Savior, we cannot help but feel an overwhelming amount of gratefulness to

God and to you, our supporters.



“and teaching them to obey everything I have commanded you. And surely I am with you always, to the very end of the age.”

Matthew 28:20



- We kindly ask that you lift our entire staff in prayer. We have had to make tough decisions and still have more to make. Pray that God will guide us and give us discernment so that we may do His will.

- Please pray that we will know how to best serve the community and share the Gospel with those around us --

especially with those going through hard times due to different aspects of COVID.

- We ask that you prayerfully consider donating towards our Compassion Ministries. When you do, you help ministries such as Healing Hands and others that have been an enormous blessing to many.
- Pray for all Impacto workers -- for them to remain healthy and also for the safety of those in construction

He is
Risen

